

Mradi wa Maboresho ya Mtaa wa Samora - Jijini Dar es Salaam

Lengo la Mradi:

- Kuboresha usalama barabarani na kuondoa msongamano wa magari kwa kutengeneza maegesho sahihi ya magari na njia za waendao kwa miguu.
- Kusaidia juhudi za Manispaa ya Ilala za kupendeleza mitaa ya Jiji na kuweka taa za barabarani

Mbinu za Utekelezaji

1. Kuanzisha sheria za maegesho ya magari katika barabara kwa kutegemea nafasi zilizopo
2. Kuondosha maegesho yasiyo rasmi na kuanzisha maeneo rasmi ya maegesho ya magari kwa kuzingatia sharia.
3. Kutekeleza/Kusimamia sharia za maegesho ya mitaani kwa kuweka alama na michoro ya maegesho katika mitaa.
4. Kujenga njia za waendao kwa miguu kwa kuboresha njia hizo pamoja na upandaji wa miti.

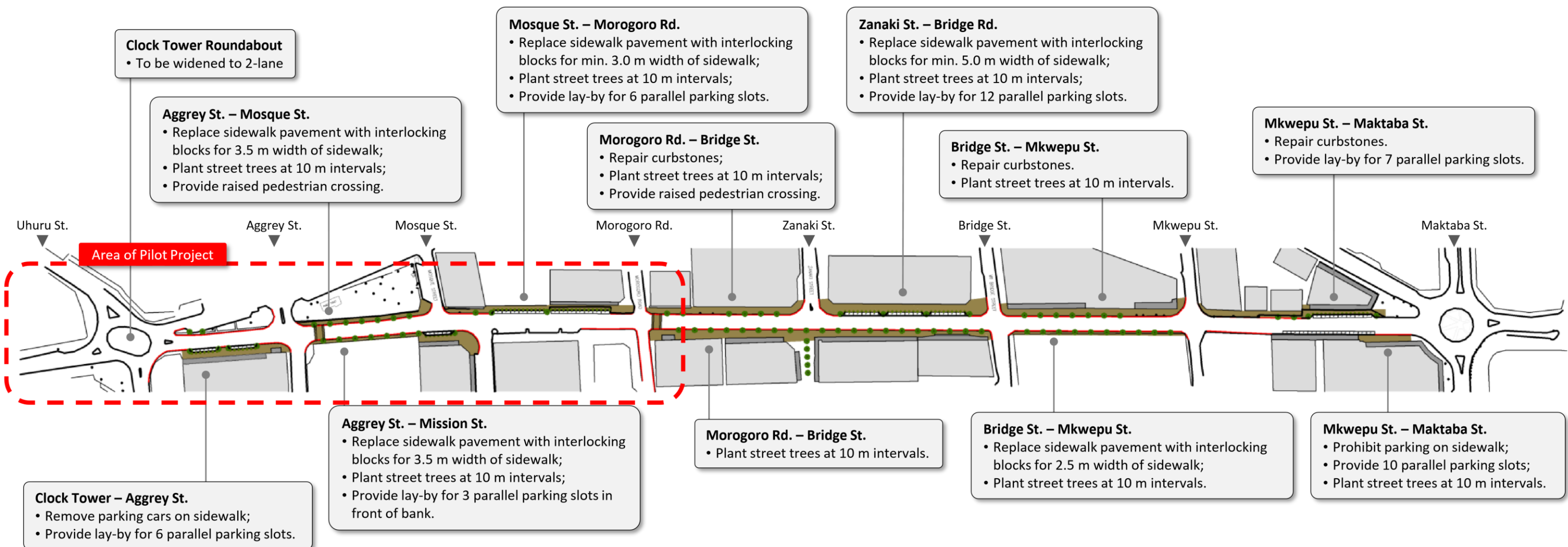
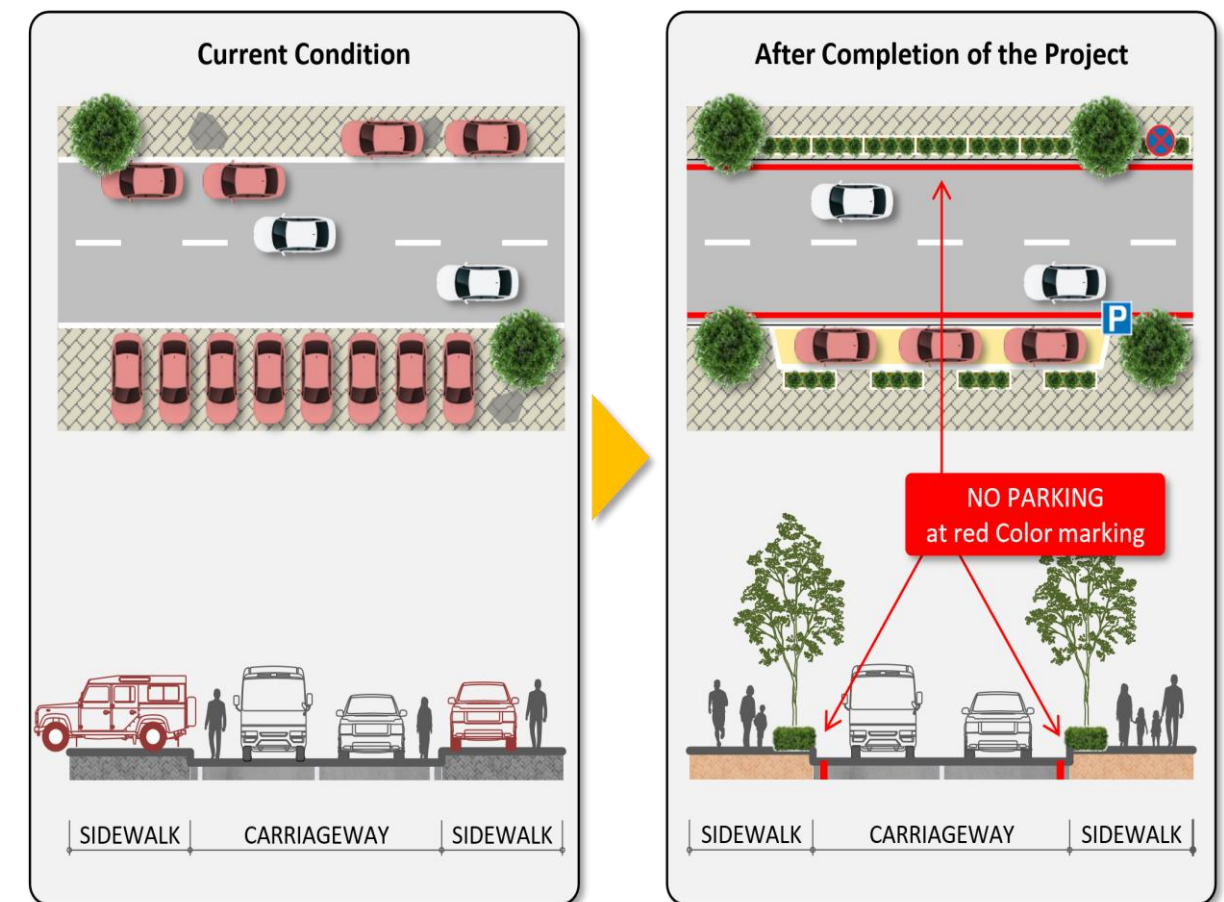
Faida za Mradi

1. Kuboresha mazingira mazuri na salama ya waenda kwa miguu kandokando ya Mtaa wa Samora.
2. Mazingira mazuri ya maegesho ya magari yatachangia mapato na kupandisha thamani ya ardhi/nyumba.

Hasara tarajiwa za Mradi

1. Wakati wa ujenzi, mradi utasababisha wateja kupungua katika biashara.
2. Idadi ya maegesho ya Mtaa wa Samora yatafungua wakati na baada ya ujenzi wa mradi.
3. Kwa kiasi kidogo kutakuwa na athari za kimazingira ikiwemo kelele za mitambo na vumbi litokanalo na utekelezaji wa kazi za ujenzi.

Gharama za Mradi:- Zinakadiriwa kuwa jumla ya Dola za Kimarekani 400,000 ambazo ni msaada kutoa Serikali ya Watu wa Japani. Mradi ulianza kutekelezwa mnamo mwezi Januari, 2017 na unatarajiwa kukamilika mnamo mwezi Julai, 2017.



Hali Halisi ya Sasa ya mtaa wa Samora

Matatizo na Changamoto

Aggrey St. – Mosque St.

- Number of pedestrian across the park is many (2,000 person/hour) but the footpath surface is in bad condition.



Mosque St. – Morogoro Rd.

- Sidewalk space is occupied by parking cars (average 23 illegal parking cars on sidewalk and 8 parking cars on lay-by).
- Pedestrians are forced to walk along carriageway.



Morogoro Rd. – Bridge St.

- Sidewalk space is occupied by parking cars (average 8 illegal parking cars on sidewalk and 8 parking cars on carriageway).
- Pedestrians are forced to walk along carriageway.



Zanaki St. – Bridge Rd.

- Footpath space and parking space are clearly separated but the footpath space is narrow (2 m only).
- Average 42 parking cars on sidewalk space.



Mkwepu St. – Maktaba St.

- There is parking lay-by but the sidewalk width is not wide enough.
- There are 18 parking cars on lay-by and 6 parking cars on carriageway on average.

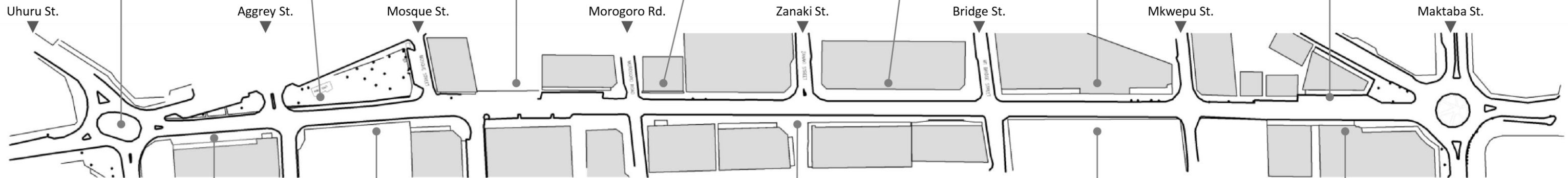


Clock Tower Roundabout

- This is a bottleneck for vehicular traffic because Samora Avenue has 2-lane but the roundabout is 1-lane.
- This roundabout should be widened to 2-lane capacity.

Bridge St. – Mkwepu St.

- Condition of footpath is not so bad.



Clock Tower – Aggrey St.

- Sidewalk space is occupied by parking cars (average 15 illegal parking cars).
- Pedestrians are forced to walk along carriageway.



Aggrey St. – Mission St.

- Sidewalk width is limited due to the fence for construction of the building.
- The position of the fence should be set back and 4-6 m width of sidewalk should be provided.
- Sidewalk space in front of bank is occupied by parking cars (average 10 illegal parking cars).



Morogoro Rd. – Bridge St.

- There are illegal on-street parking cars on sidewalk (average 2 illegal parking cars).
- Some portion of sidewalk pavement is damaged.



Bridge St. – Mkwepu St.

- Sidewalk pavement is totally damaged.
- Sidewalk space is occupied by parking cars (average 15 illegal parking cars).



Mkwepu St. – Maktaba St.

- Some portion of sidewalk is secured for pedestrian but the space in front of bank are occupied by parking cars (average 12 illegal parking cars on sidewalk and 13 parallel parking cars on carriageway).



Scope of Works

1. Widening of Clock Tower Roundabout in order to secure the 2-lane width from Samora Avenue.
2. Renovation of sidewalk of the section from Clock Tower Roundabout to Morogoro Road with min. 3.5 m width walkway plus 1.5 m wide vegetation zones or 2.3 m wide parking zones.
3. Paint edge line markings with red color paint as an indication of "No-parking" and no parking will be allowed except at the designated parking zones.



① Vegetation zone (1.5 m width)



② Parking Lay-by (2.3 m width)



③ Grass pavement in the park



④ Raised pedestrian crossing

Implementation Schedule

	2016												2017				
	Jan	Feb	Mar	Apr	May	Jun	Jul	Aug	Sep	Oct	Nov	Dec	Jan	Feb	Mar	Apr	May
Assignment of Technical Working Group	█																
Preparation of baseline traffic survey			█														
Collection of baseline traffic information and root cause analysis				█													
Draft concept plan of the pilot project		█	█	█													
Scoping of the project				█													
Detailed Investigation, Design, Cost Estimates					█	█											
Stakeholders' Meeting (Public Consultation)					█	█											
Confirmation of Scope of Works						▲											
Amendment of Contract with JICA									█	█							
Preparation of Bid/Contract Documents									█	█							
Bidding and Contract Negotiation										█	█						
Mobilization of Contractor											█	█					
Construction works												█	█	█	█	█	█
Completion of construction works																	▲

